

# Phase 1 trial of the adenosine A2A receptor antagonist inupadenant (EOS-850): Update on tolerability, and antitumor activity potentially associated with the expression of the A2A receptor within the tumor.

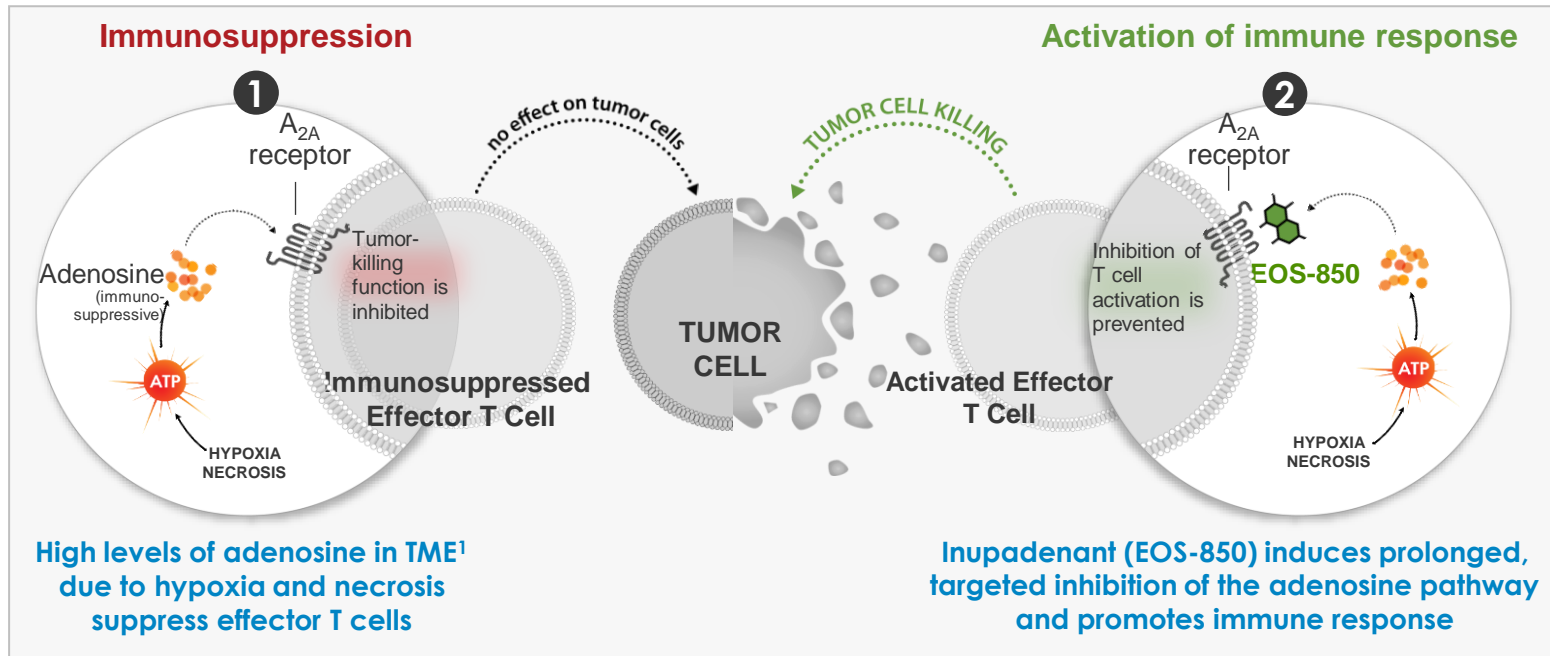
Laurence Buisseret<sup>1</sup>, Sylvie Rottey<sup>2</sup>, Johann De Bono<sup>3</sup>, Arianne Migeotte<sup>4</sup>, Brant Delafontaine<sup>2</sup>, Thubeena Manickavasagar<sup>3</sup>, Chiara Martinoli<sup>5</sup>, Noémie Wald<sup>5</sup>, Maura Rossetti<sup>5</sup>, Esha Gangolli<sup>6</sup>, Erol Wiegert<sup>5</sup>, Nicola McIntyre<sup>5</sup>, Joanne Lager<sup>6</sup>, Jean-Pascal Machiels<sup>4</sup>

1. Department of Medicine, Institut Jules Bordet, Université Libre de Bruxelles, Brussels, Belgium
2. Department of Medical Oncology, Drug Research Unit Ghent, Universitair Ziekenhuis Ghent, Ghent, Belgium
3. Drug Development Unit, The Institute of Cancer Research and The Royal Marsden Hospital, Sutton, UK
4. Department of Medical Oncology and Head and Neck Surgery, Cancer Center, Cliniques Universitaires Saint-Luc and Institut de Recherche Clinique et Experimentale (Pole MIRO), Université Catholique de Louvain, Brussels, Belgium
5. iTeos Therapeutics SA, Gosselies, Belgium
6. iTeos Therapeutics Inc., Cambridge, MA 02142, USA

# Author Disclosures

- L. Buisseret: Institutional research grant (AstraZeneca), institutional travel grant (Roche), speaker honoraria (BMS)
- J. De Bono: Advisory board member (Amgen, Astellas, AstraZeneca, Bayer, Bioexcel Therapeutics, Boehringer Ingelheim, Cellcentric, Daiichi, Eisai, Genentech Roche, Genmab, GlaxoSmithKline, Harpoon, Janssen, Menarini Silicon Biosystems, Merck Serono, Merck Sharp & Dohme, Orion Pharma, Pfizer, Qiagen, Sanofi Aventis, Sierra Oncology, Taiho, Terumo, Vertex Pharmaceuticals); institutional support (Astellas, Astra Zeneca, Bayer, Cellcentric, Daiichi, Genentech Roche, Genmab, GlaxoSmithKline, Harpoon, Janssen, Merck Serono, Merck Sharp & Dohme, Orion Pharma, Pfizer, Sanofi Aventis, Sierra Oncology, Taiho, Vertex Pharmaceuticals); inventor patent 8, 822,438 (no financial interest); NIHR Senior Investigator
- A. Migeotte, S. Rottey, T. Manickavasagar, B. Delafontaine : No disclosures
- J-P. Machiels: Advisory board member or speaker with honoraria (institutional management; Pfizer, Roche, Astra/Zeneca, Bayer, Innate, Merck Serono, Boehringer, BMS, Novartis, Janssen, Incyte, Cue Biopharma, ALX Oncology, iTeos, eTheRNA); travel expenses (Amgen, BMS, Pfizer, MSD); data safety monitoring board with honoraria (Debio, Nanobiotix, Psioxus); funding to institution for research support (all companies); uncompensated advisory role (MSD); EORTC (investigator and study coordinator, H & N group Chair-elected)
- C. Martinoli, N. Wald, M. Rossetti, E. Gangolli, E. Wiegert, N. McIntyre and J. Lager are employed by iTeos Therapeutics and may own stock/stock options in the company.

# Background and Methods



## Primary Objectives

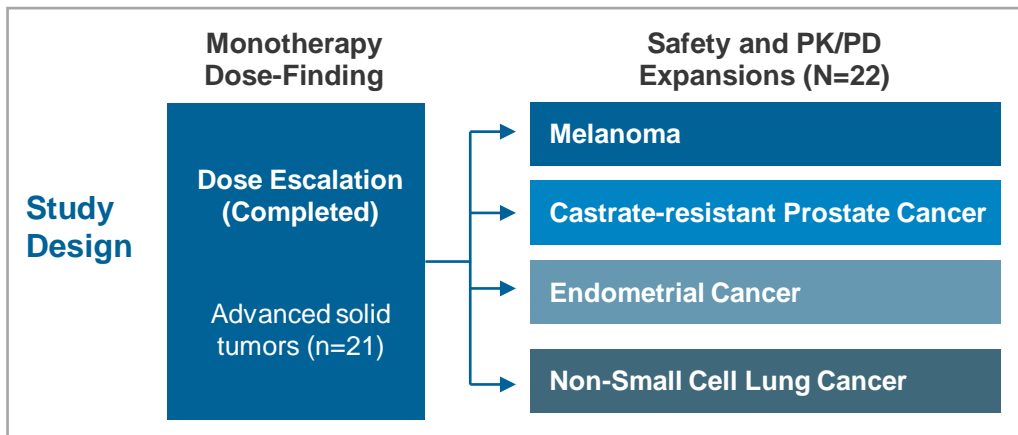
- Safety and tolerability of inupadenant as a single agent and in combination with pembrolizumab and/or chemotherapy
- Define MTD and RP2D of inupadenant as monotherapy or in combination

## Secondary Objectives

- PK and antitumor activity of inupadenant as monotherapy

## Exploratory Objectives

- PD activity and association of plasma PK, safety, efficacy and PD biomarkers of inupadenant as monotherapy

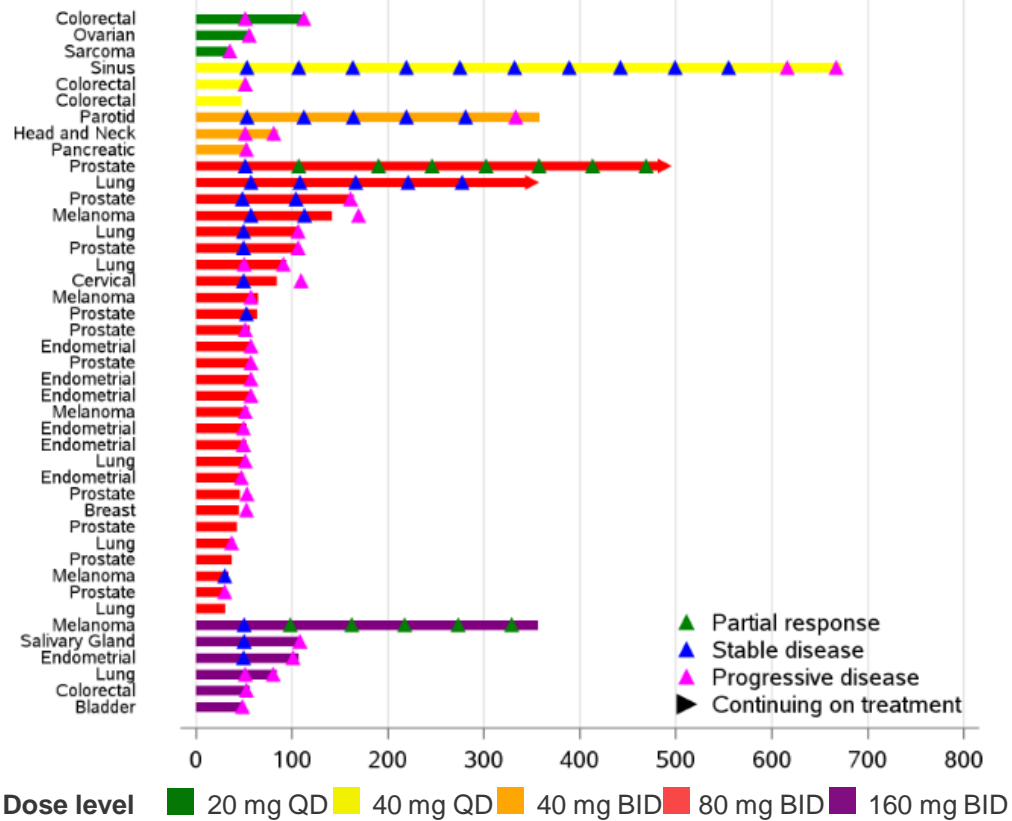


**Demographics**

	Total (N=43)		Total (N=43)	
Age (Yrs, Median, Range)	60 (28-75)	Lines of prior therapy (Median, Range)	3 (1-10)	
Sex (N, %)		Prior immunotherapy (N, %)		
Male	25 (58.1)	No	28 (65.1)	
Female	18 (41.9)	Yes	13 (32.6)	
Race (N, %)		Missing	1 (2.3)	
Asian	1 (2.3)			
Black/African-American	1 (2.3)			
White	40 (93.0)			
Other	1 (2.3)			

# Updated safety & efficacy from inupadenant monotherapy – durable responses observed

## Activity in patients treated with multiple lines of therapy



- 2 durable PRs - Castrate-resistant prostate cancer (ongoing), melanoma
- 1 SD > 1 yr - Sinus carcinoma
- 2 SDs > 6 mo - Parotid gland carcinoma and lung cancer (ongoing)

## Most Frequent (≥15%) TEAEs

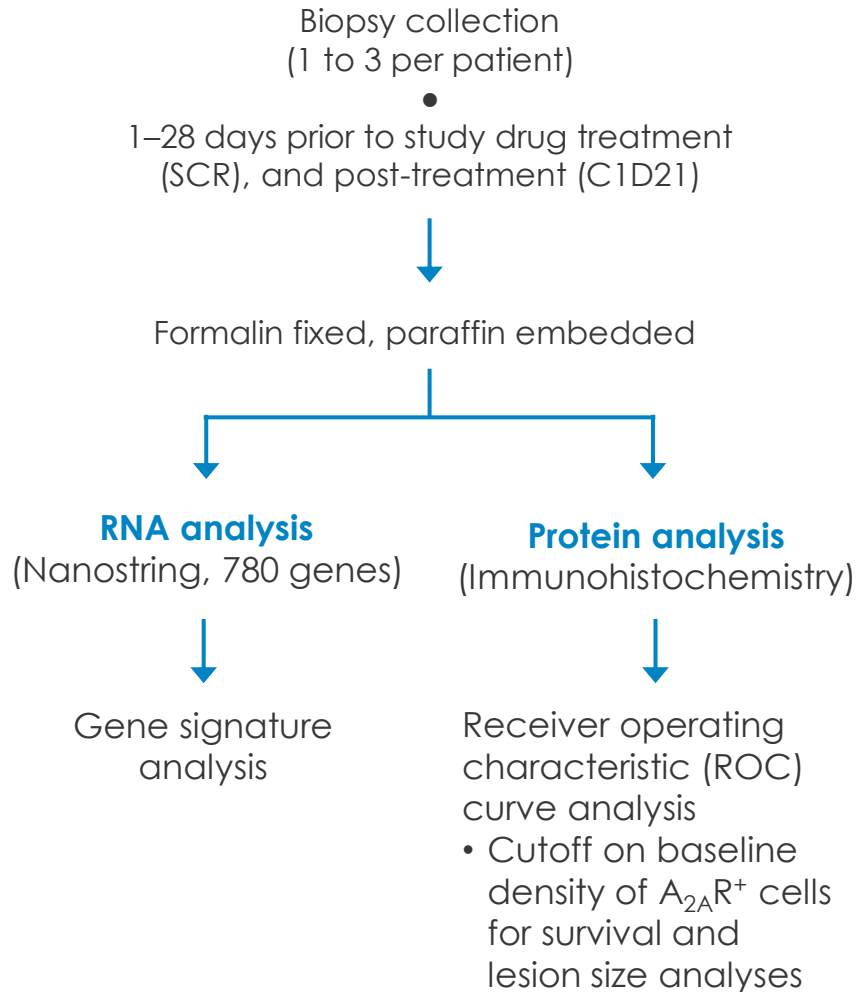
Preferred Term	Number of Patients (%)					Total (N=43)
	20 mg QD (N=3)	40 mg QD (N=3)	40 mg BID (N=3)	80 mg BID (N=28)	160 mg BID (N=6)	
Fatigue	1 (33.3)	2 (66.7)	1 (33.3)	9 (32.1)	4 (66.7)	17 (39.5)
Anemia	0 (0.0)	2 (66.7)	0 (0.0)	11 (39.3)	1 (16.7)	14 (32.6)
Decreased appetite	2 (66.7)	1 (33.3)	1 (33.3)	5 (17.9)	3 (50.0)	12 (27.9)
Constipation	2 (66.7)	1 (33.3)	0 (0.0)	7 (25.0)	1 (16.7)	11 (25.6)
Aspartate aminotransferase increased	1 (33.3)	1 (33.3)	0 (0.0)	4 (14.3)	2 (33.3)	8 (18.6)
Alanine aminotransferase increased	2 (66.7)	0 (0.0)	0 (0.0)	3 (10.7)	2 (33.3)	7 (16.3)
Diarrhoea	0 (0.0)	1 (33.3)	1 (33.3)	4 (14.3)	1 (16.7)	7 (16.3)
Dyspepsia	0 (0.0)	1 (33.3)	0 (0.0)	4 (14.3)	2 (33.3)	7 (16.3)
Dyspnoea	0 (0.0)	0 (0.0)	1 (33.3)	3 (10.7)	3 (50.0)	7 (16.3)
Nausea	1 (33.3)	1 (33.3)	1 (33.3)	3 (10.7)	1 (16.7)	7 (16.3)

Drug-related SAEs in 3 patients: Acute myocardial infarction (160 mg BID), atrial fibrillation and pericardial effusion (80 mg BID)

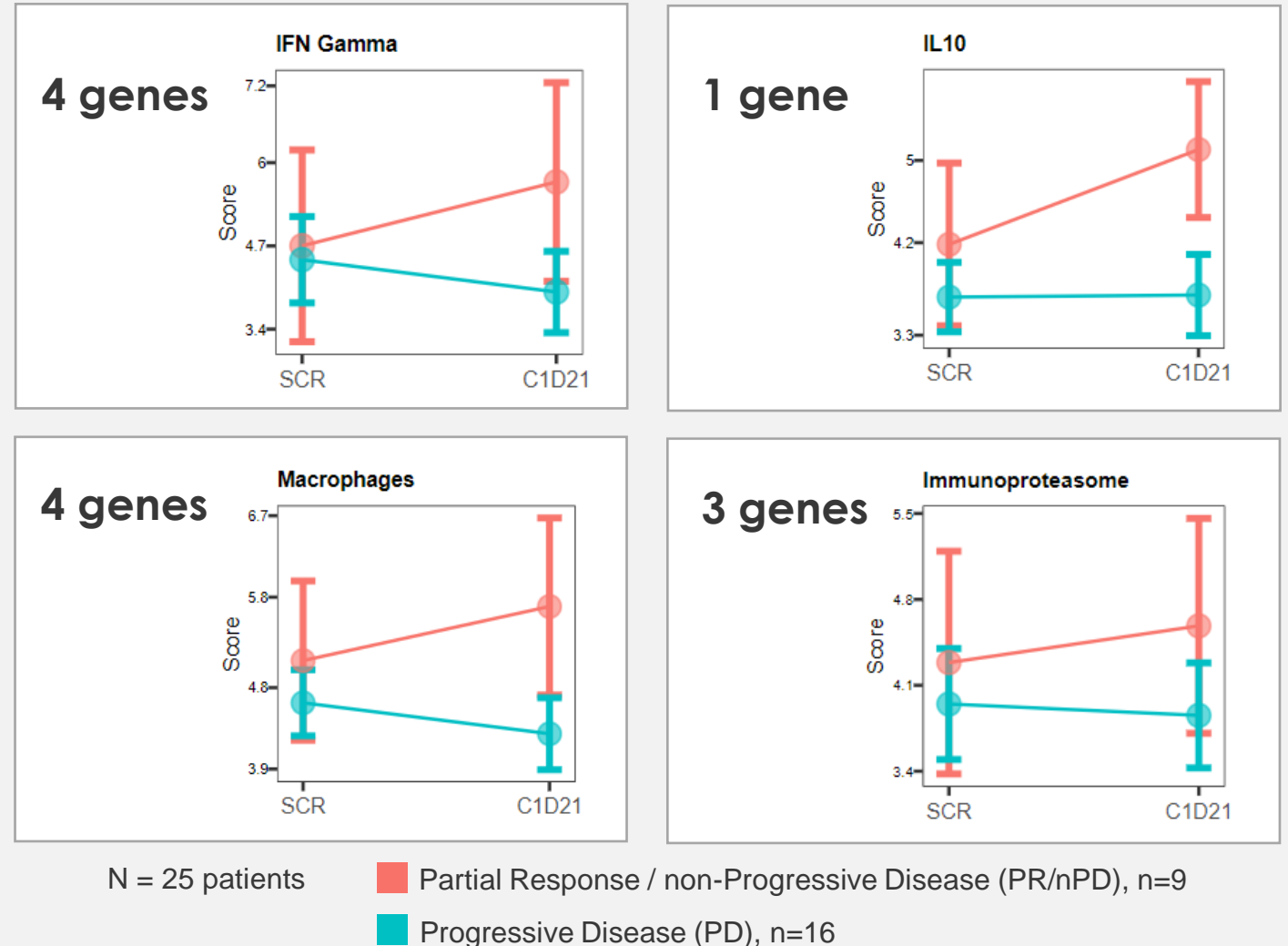
# Gene Expression Within Tumors

Inupadenant up-regulates immune-related gene signatures in non-progressors

## Biomarker Methods

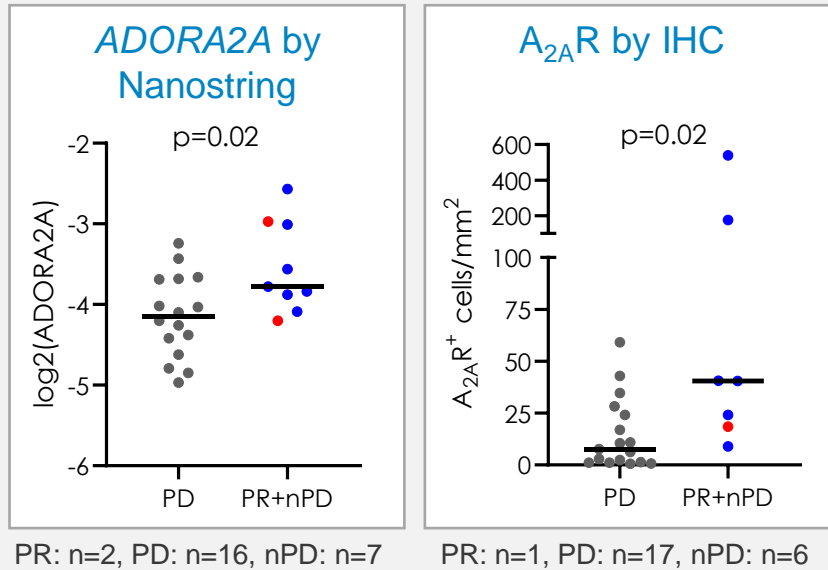


## Gene Signature Analysis by Nanostring

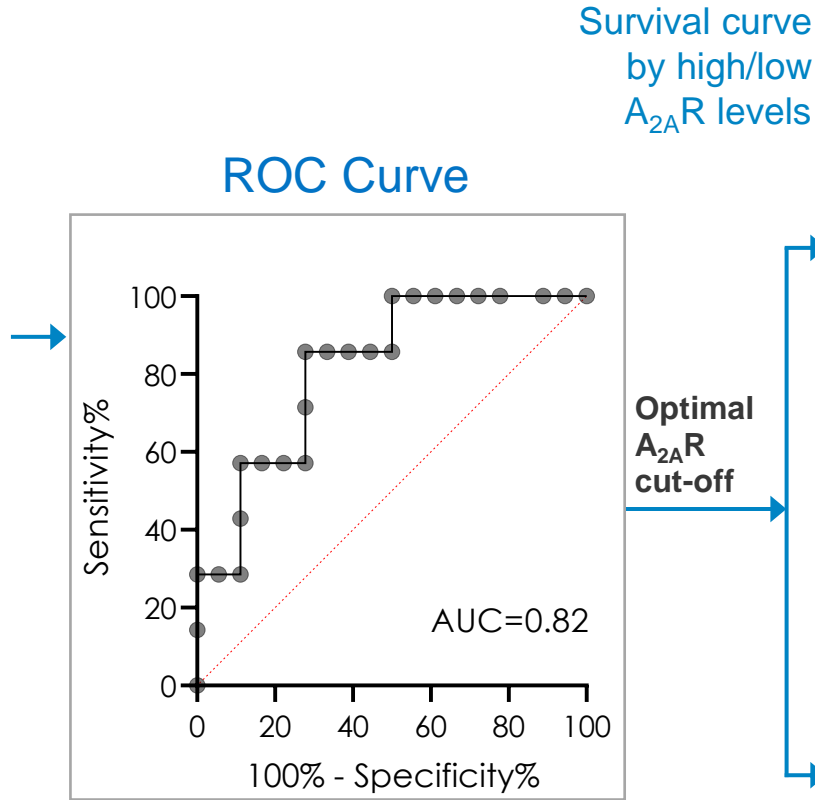
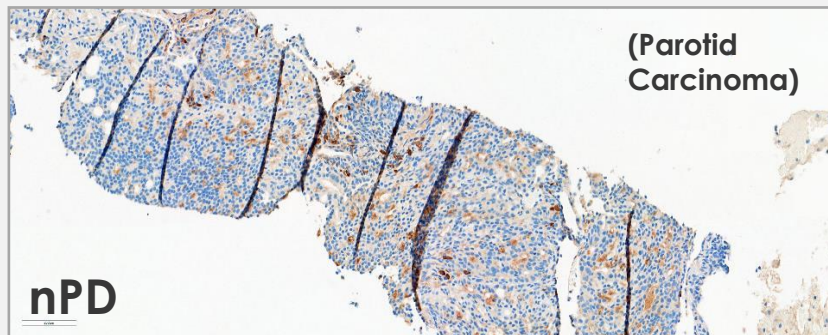


# A<sub>2A</sub> Receptor (A<sub>2A</sub>R) within the tumor

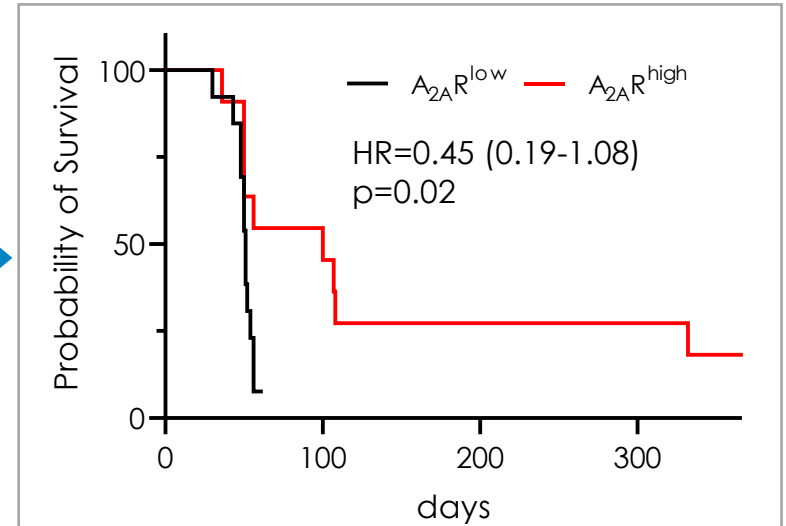
Inupadenant anti-tumor activity is possibly associated with A<sub>2A</sub>R expression within the tumor area



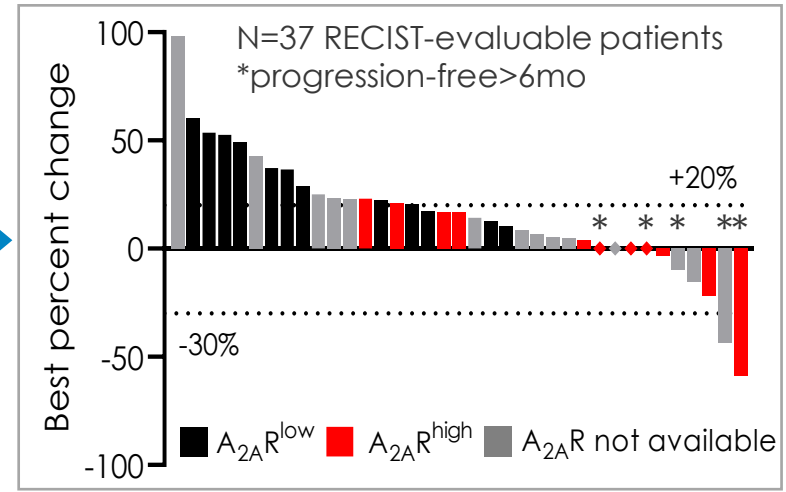
- Progressive Disease (PD)
- Partial Response (PR)
- non-Progressive Disease (nPD)



Survival curve by high/low A<sub>2A</sub>R levels



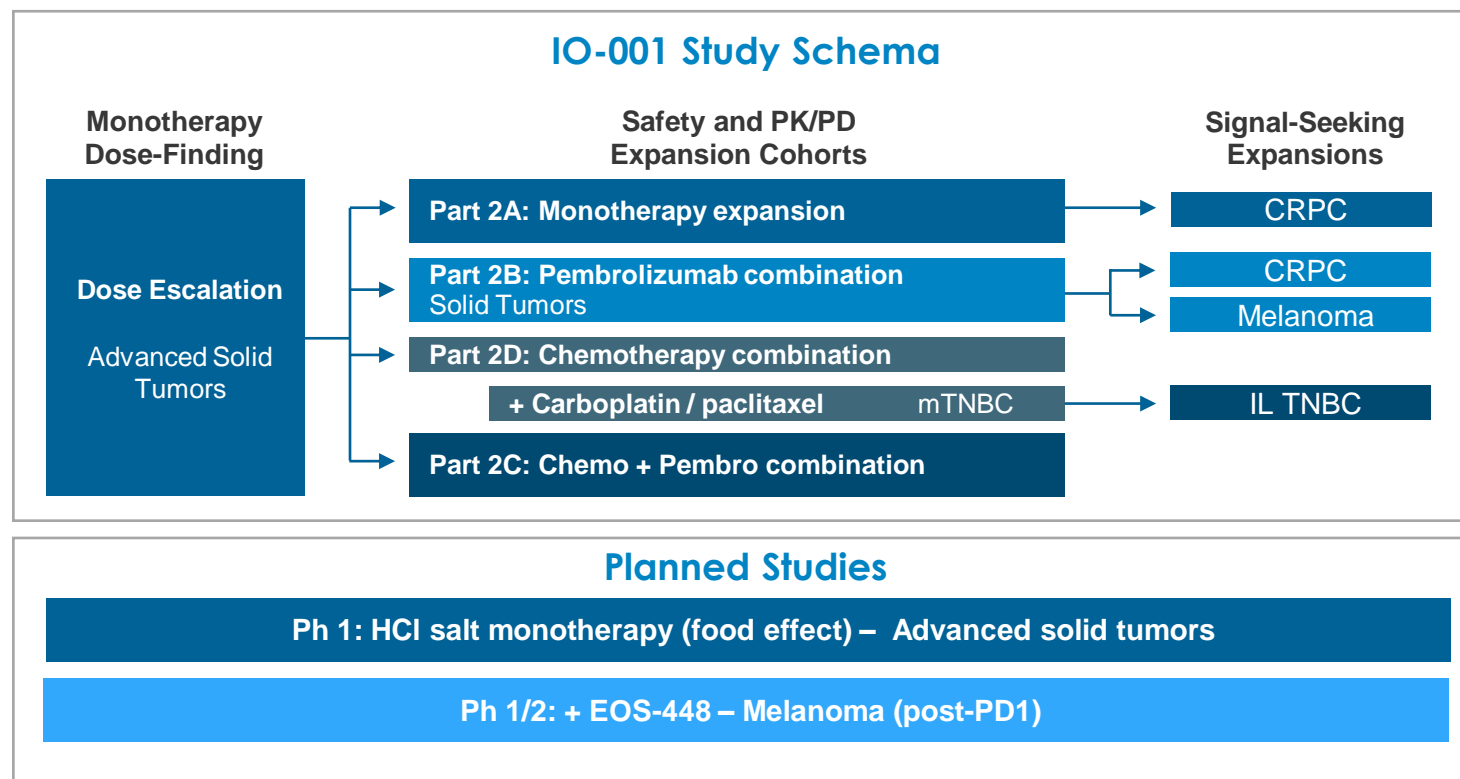
Best % Change in Tumor Lesion by High/Low A<sub>2A</sub>R levels





# Inupadenant is tolerated well and shows signs of activity potentially associated with the expression of the A<sub>2A</sub> receptor within the tumor

- Inupadenant safety in this larger data set is **consistent with previously presented data**.
- 2 PRs and 3 SDs were **durable**.
- Analysis of pre-treatment tumor biopsies has identified that **A<sub>2A</sub>R may be associated with clinical outcome**. This provides new mechanistic insights, which we are continuing to investigate.
- **Expansion arms** in the ongoing study will evaluate activity in monotherapy, and in combination with either pembrolizumab, chemotherapy or both.
- **Future studies** will evaluate A<sub>2A</sub>R as a potential selection biomarker.



## Acknowledgments

Thank you to the participating patients and families

- Investigators and site personnel
- Inupadenant project team
- Mary Moynihan (M2Friend BioCommunications) – graphics

